

wein *pfan*, *im* *Küf* *so* *zu* *wein* *pfan!*
blü - *fen* *und* *zu* *zu* *und* *glü* *fen!*

cresc

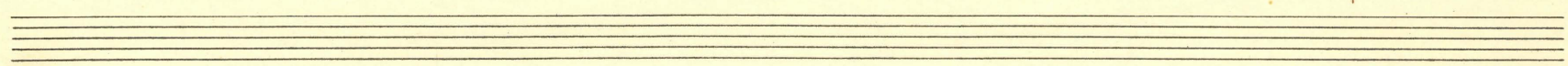
1. mal.

p *dim*

2. mal.

3. Wöunt *ist* *aus* *ma* - *fen*, *zu* *tu* *bal* *aus* *ge* - *fen* *zu*

pp



flin-ken in Luft
 Ich halt vor mir vor mich die Welt in der

cruc

an
 man.

p

4 To mit den für zu

mp

will Sie bei uns kommen zum ersten Mal

meno

This system contains the first two staves of music. The top staff is a vocal line with lyrics written in cursive. The bottom staff is a piano accompaniment with dense chordal textures and moving lines in both hands. A dynamic marking *meno* is written below the piano staff.

sein, ist nicht in die Kammern und Orchester zu

This system contains the next two staves of music. The vocal line continues with the lyrics. The piano accompaniment maintains its complex texture. The system concludes with a double bar line.

meno

This system contains the final two staves of music on the page. It consists of a piano accompaniment with a dynamic marking *meno* at the beginning. The system ends with a double bar line. Below this system are three empty staves.