

144.

O Saitenspiel (Paul Heyse)

G. Jenner

18. März 1914

Mässig langsam.

O Saitenspiel in feiner Stunden

Wusst, wann du ergöttest zur Ruh in Abendst.

Stor laur sigurinn um im Maa - ru var Linn, flum - um var

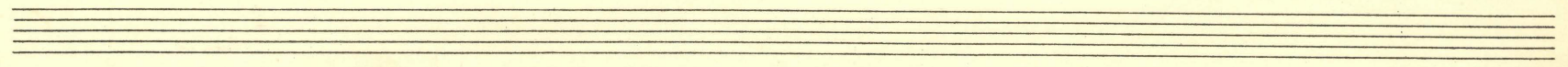
The first system of the handwritten musical score consists of three staves. The top staff is a vocal line in treble clef with a key signature of two flats and a common time signature. It contains the lyrics "Stor laur sigurinn um im Maa - ru var Linn, flum - um var". The middle and bottom staves are piano accompaniment, with the middle staff in treble clef and the bottom staff in bass clef. The piano part features a complex texture with many beamed sixteenth notes and chords.

glum - um sigurinn fundu Linn, Nið ton um Of

The second system of the handwritten musical score consists of three staves. The top staff is a vocal line in treble clef with a key signature of two flats and a common time signature. It contains the lyrics "glum - um sigurinn fundu Linn, Nið ton um Of". The middle and bottom staves are piano accompaniment, with the middle staff in treble clef and the bottom staff in bass clef. The piano part continues with complex textures, including many beamed sixteenth notes and chords.

stalt, nið fundu - um Linn, mit

The third system of the handwritten musical score consists of three staves. The top staff is a vocal line in treble clef with a key signature of two flats and a common time signature. It contains the lyrics "stalt, nið fundu - um Linn, mit". The middle and bottom staves are piano accompaniment, with the middle staff in treble clef and the bottom staff in bass clef. The piano part continues with complex textures, including many beamed sixteenth notes and chords.



Ein Klau'gen will nicht sein bei dir

fin.

Gib mir süßst du, du bist zu schön, nicht der sein

The image shows a handwritten musical score on aged paper, numbered '63' in the top left corner. The score is written in ink and consists of three systems of music. Each system includes a vocal line (treble clef) and a piano accompaniment (grand staff with treble and bass clefs). The lyrics are written in German cursive below the vocal line.

System 1:
Vocal: *Vom - mast* *Forum* *kennt sie ein* *die Punkt* *ein*
Piano: *cresc*

System 2:
Vocal: *Wut - la* *der* *Q* *wirkt* *ein* *ein* *mal* *um*
Piano: *rit*

System 3:
Vocal: *göl - la* *der* *wir -* *ligen* *Zeit.*
Piano: *rit*

At the bottom of the page, there are three empty musical staves.